

FREE - TAKE ONE!

Vol. 28 No. 18

JULY 29, 2021

800-543-8271 • 800-665-8875

WEEKLY **TRADER** MAGAZINE



Find us on
Facebook

@myweeklytrader
AUCTIONS PG. 8

VISIT OUR NEW WEBSITE! MYWEEKLYTRADER.COM

**You pull it,
we sell it...
CHEAP!**



Lebanon, MO

22395 Rt. 66

417-588-3555

Fax 417-588-8955



U★PULL★IT SELF-SERVICE AUTO PARTS

We also have a large inventory
of used tires and be sure to check
out our used car lot!

Mon.-Fri. 8:00am-5:00pm • Sat. 8:00am-4:30pm

WWW.SSUPULLIT.COM

Located next to S&S Recycling.



For All Your Metal Recycling Needs

Lebanon, MO

22395 Rt. 66

417-588-3555

Fax 417-588-8955

Mtn. Grove, MO

8930 First Rd

417-926-3360

Fax 417-926-0180

**Roll-off, Trailer, and
Mobile Crushing
Services Available**

Monday-Friday 8:00am-4:30pm (Closed 12pm-1pm Lunch)
Saturday 8:00am-Noon

email: contact@ss-recycling.com

Buyer of all types of scrap metal.

Land

For Sale

Dallas Co., MO • 44.82 +/- Acres



\$159,500

- Multiple 150-160 class deer in the area with 1000s of acres of QDMA neighbors and Nature Conservancy
- Very nice timber tract just minutes to Bennett Springs State Park and world-class trout fishing
- Property is the perfect set up for deer and turkey hunting with excellent food plots and stand locations all in place
- Nice cabin with good trail system for easy access
- Property is 15 minutes to Lebanon, 45 minutes to Springfield, and 2 hours to St. Louis, located on black top road
- Water consists of small creek
- Great building sites for cabin or home
- Black top road frontage



WHITETAIL PROPERTIES REAL ESTATE

HUNTING | RANCH | FARM | TIMBER

Brian Utecht | 417-766-5595

Brian.Utecht@whitetailproperties.com

WHITETAILPROPERTIES.COM

Missouri's Top Land Specialist in 2014, 2015, 2016, 2017, 2018 and 2019



Getting Chores Done
LAND PRIDE
does that

DH25 SERIES

DISC HARROWS
40-100 HP 72", 96" Widths



www.landpride.com

- Cat. 1 & 2 Hitch
- 20" or 22" Notched blades
- 3" Square frame
- 7-1/2" Blade spacing
- Angle front & rear gangs up to 21 degrees
- Adjustment handle to aid in angling
- 1/2" Thick bearing hangers

For Outstanding Products & Service

AGRI-ENTERPRISES

1-1/2 Miles South Of Licking, MO On Hwy 63
573-674-2203 • 1-800-653-7152 • www.agri-enterprises.com

ROUTE 66 DINING & LODGING GUIDE:
183 pages, \$5.00. 417-532-2045. (leave message) Lebanon.


METAL ROOFS: We repair leaky metal roofs with warranty. Also, flat roofs, very affordable, cover all state. 573-338-1148. Jefferson City.

POOL TABLES: Installations, moves, recovers, repairs, accessories, etc. 573-646-1700.


THE HEART OF THE SPRING BOOK. A Bennett Spring Novel by Laura L. Valenti, 161 pages. \$6.50. 417-532-2045. (Leave message and phone number). Lebanon.

WEATHERED BARN WOOD SIDING: 10" wide. 573-729-7226. www.pineridgerustic.com Salem.

BOOTS: Rubber and leather boots and hip waders. Men's 11, Women's 7, some insulated, \$15-\$40 obo. 636-239-2695. Washington.




VOTED #1 BEST Preowned Car Dealership




TIM'S USED CARS


(573) 341-3828 • 1334 South Bishop (Hwy. 63) • Rolla, MO
Next to Hwy CC • www.tims-used-cars.com




2011 FORD F-550 XL
2WD, 6.7 Diesel, Auto, AC, Box Truck, 199,xxx Miles
Only \$18,500



2013 CHEVY 1500 LTZ
Crew Cab, 4x4, 5.3 V8, Loaded w/ Options, 100,xxx Miles
Only \$26,500



2010 RAM 1500 BIG HORN SPORT
Crew Cab, 4x4, 5.7 Hemi, Power Equipped, 180,xxx Miles
Only \$15,500



2014 RAM 2500 TRADESMAN
Crew Cab, 4x4, 5.7 V8, Power Equipped, 164,xxx Miles
Only \$22,900

LARGE SELECTION OF CARS, TRUCKS, SUVs & VANS!



Cheyenne Acres

Horse & Tack

BUY - SELL - TRADE

by Rolla, MO

Call For Directions & Availability

Call Kip

573-368-9402



FERTRELL ORGANIC FERTILIZER:
Free Catalog. 315-796-4370. Caulfield.

BUYING STANDING CEDAR: Minimum 6-in diameter. 417-531-0403.

LOG SIDING: 2X8 Pine/Western Cedar
www.pineridgerustic.com 573-729-7226. Salem.

USED MOBILE HOMES: Call David at VILLA HOMES IN ROLLA 573-578-8072. Rolla.

BUYING MOBILE HOMES: Call David at VILLA HOMES IN ROLLA 573-578-8072. Rolla.

0% for 4 Years



HEATMOR
Outdoor Wood
Furnace

as low as **\$168** per month

HEATMOR MIDWEST
Licking, MO 65542 • 573-674-2962

LEBANON, MO. CEMETERY BOOK, and Calvary Catholic Cemetery listings. \$10. 417-532-2045. (leave message and phone number). Lebanon.

THEY ARE HERE Tiny homes cute, cute, cute columbiadiscountshomes.com

WANTED, TIMBER TO LOG ON SHARES: Honest, reliable, references. 417-533-4607, 417-664-1195. Lebanon.

FIREARMS: Professional Repairs and Restorations. Baron's Gunsmithing. 573-363-5801, Camdenton.

SPECIALIZING IN HEAVY DUTY GATES



Cow Country Gate Sales

Call Randy: 573-569-4754
or Home: 573-539-2528
Located at: Zimmerman Welding
16889 Hwy 52, Barnett, MO

WANTED TO BUY ANTIQUE CARS: Convertible, Corvettes, unrestored, motors, parts considered. 870-324-1154. Ash Flat.

TINY HOMES – You gotta see these!! In Ashland. amegamobilehomes.com 573-657-2176.

I BUY.....used mobile homes.: Call or text 573-338-6250 or email GregS.CDH@outlook.com

TINY TINY TINY Homes Homes Homes – Call Marla 573-657-7040 chateauhomes.net

WARSAW, MISSOURI OZARK ECHOES 1964 YEARBOOK, \$20. 417-532-2045. (leave message and phone number). Lebanon.

CUSTOM SAW MILLING: 417-533-4607, 417-664-1195. Lebanon.

WANTED, TIMBER TO LOG ON SHARES: Honest, reliable, references. 417-533-4607, 417-664-1195.

REGISTERED HEREFORD & ANGUS BULLS: Home raised, Some Show-Me Select Qualified. 573-701-7828. Belgrade.

STAY-TUFF FENCE, Johnson concrete waterers, waterlines, hydrants, posts, panels, hydraulic hoses, & GOOD FOOD. Farmers Quik Stop. 417-991-1938. Lebanon.



KENT

AFC™ stands for Altosid® Fly Control.

Altosid is the most effective insect growth regulator for the control of horn flies for cattle on pasture.

- .4% AFC™
- MG Aureo/AFC™
- Pasture Aureo/AFC™
- Pasture Breeder Aide® Aureo/AFC™

KENT
365 Mineral Buy 10 Get 1 FREE While Supplies Last



YOUR TRUSTED SOURCE FOR QUALITY FEED & FARM-LIFE ESSENTIALS



Portable Feed Bins Ready For Your Farm!



Kropf Feeds

“DOING BUSINESS ON OUR WORD AND A HAND SHAKE”
Located in the Heart of the Amish Mennonite Community!
417-345-8600 • 19 Prairie Lane, Buffalo

Built on Trust
EST. 1927

kentfeeds.com

MOEN KITCHEN FAUCET: Single lever, sprayer, new cartridge. \$45 obo. 636-239-2695. Washington.

450 ROUND BALES: 4X5 Netwrap, good quality. \$50. Bale. 417-345-5634. Phillipsburg.

COOKBOOK COLLECTION: \$1.00 each. Many varieties. 417-532-2045. (Leave message and phone number). Lebanon.

BLACK ANGUS BULLS: from 12 to 18 months. 417-932-4026. Summersville.

CONWAY HIGH SCHOOL BEARS 2000-2001 YEARBOOK. \$12.50. 417-532-2045. (Leave message and phone number). Lebanon.

SMALL SQUARE BALES OF STRAW: 417-932-4026. Summersville.

Pine Ridge Rustic

Log Home Building Supplies

Services Offered!

- Installation
- Pre-finishing available on interior & exterior
- Dealer for exterior stains

www.pineridgerustic.com

523 CR 2410 • Salem, MO 65560 • Ph: 573-729-7226



- Log Siding
- Beveled Siding
- Car Siding • Red Cedar
- Western Cedar • Pine

HIRING CAREGIVERS!

- Competitive Wages
- Full or Part Time
Call Now!

Reba's Family Care, LLC

417 664-0760 • Reba Green | 573-434-3764 • David Green

SPECIALIST FROM "HARDSCRABBLE" BOOK: by Elbert Crittenden Traw, DDS. Life in Stoutland/Richland/Camden County area. Hardback, \$5.00. 417-532-2045. (Leave message and phone number). Lebanon.

PAYING CASH FOR VINTAGE WHISKEY, BOURBON, RYE, SCOTCH, ETC.: Only full and sealed collections from old bars, estates, liquor stores, etc. Call or text 217-440-5752. St. James.

DARDEN PROFESSIONAL TIMBER HARVESTING, BUYING STANDING TIMER: Great prices, improve wildlife habitat and improve forest health. State Certified & Fully Insured! 573-247-4808 or 573-739-1122. Salem.

PRICE REDUCED!!! 2017 BUICK LACROSSE PREMIUM: 17,000 miles, warranty, \$30,375. negotiable. 417-718-0014. Lebanon.

CHEST SIZE FREEZER: Full of meat. \$175 meat only. 573-327-9068. Desloge.

250 CANNED GOODS OF ALL KINDS: \$150 for all. 573-327-9068. Desloge.

FOR SALE: 2007 Adirondack RV with slide-out. \$11,000. Would consider trade for building lot in the Ozarks. 417-766-3997. Springfield.



Meadowview Dutch Market

Call to Order
417-993-3017

Discount & Surplus Groceries • Prices Subject to Stock on Hand

Sale Dates July 28th, 2021 to Aug 3rd, 2021 while supplies last!

DELI SPECIAL

BLACK FOREST HAM..... REG. \$6.15 **SALE \$5.65**

BUTTER CHEESE..... REG. \$6.15 **SALE \$5.65**

TRY our Fresh Homemade DELI Sandwiches: TURKEY, HAM, ROAST BEEF, ITALIAN, BLT'S, PULLED PORK AND BLT PULLED PORK (MADE YOUR WAY)!
COME IN OR CALL to order! ALSO Custom Deli trays! Veggie OR FRESH Meat-N-Cheese!

Fresh Produce
Watermelon, Cantaloupe, Zucchini, and More!



Rada-Knives
Great Selections & Great Prices!!!

Breaded Pollock
\$1.49 LB.

Cornish Hens
\$1.69 EA. 16 OZ.

Pepperidge Stuffing
Herb Seasoning Classic
2/\$1.00 BLUE BAG 12 OZ.

BAKE YOUR OWN COOKIES
Peanut Butter Cookie Dough
\$1.99 2 LB. TUB

Marylee Pancake Mix
\$1.49 EA. APPROX. 2 LB.

Saladitas Saltines
99¢ 94.7 OZ.

Mario Cocktail Onions
SALE 2/\$1.00 4.2 OZ.

Seasoned Pork Chops
99¢ LB. 10 LB. BOX

FRESH FREESTONE PEACHES

\$23.99 1/2 BU.



BUY BULK GREAT SAVING!!

FRESH WHOLE RIBEYE **\$6.99** LB.

BEEF TENDERLOIN **\$7.99** LB.

SIRLOIN BONELESS LOIN (TOP BUTT) **\$5.25** LB.

MEADOWVIEW DUTCH MARKET

417-993-3017 Hours: Mon-Thurs 8-5pm
Fri 8-6pm • Sat 8-5pm
23 Miles West on Hwy 64 • Right on T Hwy
9 miles • Left on E Hwy 1 mile on Left

NOW ACCEPTING CREDIT, DEBIT CARDS & EBT

DUTCH COUNTRY STORE, LLC

573-378-4395
Hours: Mon-Thurs 8-5pm
Fri 8-6pm • Sat 8-5pm
5 miles East of Versailles off Hwy C on Kelsay Road



CENTRAL BOILER
CLASSIC EDGE
TITANIUM HDX

26% Tax Credit on EPA certified Central Boiler Classic Edge HDX models and installation. Call today to learn more!

Outdoor Wood Furnace CentralBoiler.com

The Classic Edge 360, 560 and 760 HDX are U.S. EPA Certified

Yarbrough Equipment Sales & Services, Inc.
9776 E. State Hwy 00 • Stratford, MO
417-736-2303 • 1-866-286-6901 • www.yarbeq.com

LAKE OF THE OZARKS – SUMMER FUN: Lots starting at \$3,950, \$79 down - \$79 per month. Beautiful Wooded Lots, short distance to the Lake. Free lake access and boat ramps. Immediate possession, own for investment, owner financing. Also Camping lots and Acreage tracts available. Prices good through August 2nd, Hwy 135 South out of Stover, MO. Take Lake Road 135-12 to the Ivy Bend Office. **Open Friday, Saturday, Sunday, call (573-372-6493) other days by appointment only.** Iveybendlandoffice.com

Pine Lumber For Sale



2x4x8'	\$4.50
2x4x12'	\$6.50
2x6x8'	\$6.00
2x6x12'	\$9.00

Call 417-247-7761 or 417-247-7100

ONE DOUBLE SET OF WHEEL CHOCKS: Safety yellow. \$30 obo. 636-239-2695. Washington.

A FRAME TINY HOUSE/SHED: 6ftx8ft, furnished, new floor, \$995. 573-759-7143. Viene.

THE BITTERSWEET OZARKS AT A GLANCE BOOK: By Ellen Grace Massey of Lebanon, hardback, 219 pages, \$12.50. 417-532-2045 (leave message and phone number. Lebanon.

175 ORIGINAL VCR MOVIES: \$1.00 each for make offer. 573-327-9068. Desloge.

OFFICIAL TRACTOR OF TOUGH™



Marshfield Machinery Inc.

222 E. Madison • Marshfield, MO 65706
417-859-2117 • www.marshfieldmachinery.com

MahindraUSA.com © 2020 Mahindra USA Inc.



NEW MAHINDRA TRACTORS

1626 4WD & LDR 26HP IN STOCK

USED TRACTORS

NH TL80A CAB, LDR 80HP 22,500
IHC 826 92 HP 9,000
ZETOR 6320 W/LDR 66HP 8,500

USED ROUND BALERS

HESSTON 945 4X5 9,000
MF 1745 4X5 8,500
JOHN DEERE 375 5X4 3,500
HESSTON 560 5X6 2,000
NH 850 5X5 1,500

USED DISC MOWERS

NH 465 9FT 2,500

USED MISC.

FRONTIER BALE PROCESSOR 8,500
SNAPPER ZERO TURN 2,750
BUSH HOG 2052 ZERO TURN 2,500
BUSH HOG POST HOLE DIGGER 1,200

Marshfield Machinery Inc.

222 E. Madison
Marshfield, MO 65706
417-859-2117
www.marshfieldmachinery.com

SMALL SQUARE BALES OF ALFAFLA HAY FOR SALE: 417-718-8584. Conway.

SWISHER COMMERCIAL PRO 52" ROUGH CUT ATV TRAIL CUTTER: 14.5 HP Kawasaki motor. Rated for up to 3" material. Like new, \$3,450. 417-270-1505. West Plains.

WOULD YOU LIKE A CATUS PLANT?: Blooms beautiful yellow flowers in the spring. Free. 417-457-1023.

BLUE HEELER PUPPIES: For sale, out of good working stock. 417-664-5926. Niangua.

Fab Wor LLC



In addition to doing custom welding and fabrication, we offer...

Crownline Flat Beds — sales and installation
Move Bumpers — assembly and installation
Custom Mini Trailers • Corral Panels

Call us if you have a special project
417-730-9357 • Hwy. 60, Seymour, MO.

Callaway Livestock Center, Inc.

Kingdom City, MO

Watch live or bid online thru D.V. Auctions
www.CallawayLivestock.com

SPECIAL COW SALE THURSDAY NIGHT AUGUST 5th, 2021 AT 6:00PM

Estimating 700 to 800 hd of Bred Cows,
Cow/Calf Pairs & Breeding Bulls.

EARLY CONSIGNMENTS

Bred Heifers

Brooks
41 fancy Blk Hfrs Weighing 1,100 -1,200 lb. Bred to Lwbw Syden Bull or Mead Angus Bull, start calving September 1st for 60 days. Pelvic measured Track Scored all shots up-to-date. Very gentle. Hand fed everyday.

Munger

18 fancy Blk Hfrs Weighing 1,100 lbs. Bred to Top Notch LBW Angus Bulls. Start calving August 15th for 45 days, all shots current.

Frank

15 fancy Blk Hfrs Weighing 1,200 lbs. Bred to Front End LBW Angus Bulls, all shots. Start calving August 17th for 65 days. Be the kind.

Goodson

10 fancy registered Angus Hfrs weighing 1,100 lbs. Bred to Enhanced Son. Start calving September 1st for 60 days. Very Gentle, had all shots on June 1st.

Christopherson

5 fancy Angus Hfrs weighing 1,100 lbs. Bred to LBW Angus Bulls, due September 1st for 60 days. Hfrs have had every Vac possible, 2 rounds on Scour Guard. Ready to go.

Hewsley

9 fancy registered Angus Cows, 2 to 4 yrs. old. Bred Angus Bulls, spring calvers. Cows are in 1st stage.

Cows

80 outstanding Angus Cows. Cows weigh 1,200 lbs plus. Bred to Connealy or Shaft Angus Bulls. Cows are 3 to 4 yrs. old start September 15th for 45 days. Front end kind.

40 outstanding Angus Cows. Cows will be 5 to 7 yrs. old. Bred to Connealy or Shaft Angus. Start September 15th. 45 days.

20 fancy Red Angus Cows. Cows will be 3 to 5 yrs. old. Bred to Connealy or Shaft Angus Bulls. Start September 15th for 45 days. All these cows have had all shots, Multimin poured, great mineral program.

45 outstanding Angus Cows. Cows weigh 1,300 plus. Due August 15th for 70 days. Bred to Lucas Sim Angus Bulls. All shots fancy kind.

70 fancy Blk or Blwf Cows. Cows be 3 to 5 yrs. old. Bred to fancy Angus Bulls. 35 of these Cows due September 1st. 35 of these Cows due February 1st.

20 fancy Char or Red Cows. Cows 2nd or 3rd period. Be 3 to 6 yrs. old.

40 fancy Blk or Blwf Cows. Cows be 3 to 6 yrs. old. Cows be 3rd period. 30 fancy Blk or Blwf Cows. Cows will be 3 to 6 yrs. old. Cows will be in 2nd period.

25 Blk or Blwf. Few Red Cows. Cows be 3 to 6 yrs. old. Bred to Sim Angus Bulls.

20 Blk or Blwf Cows. Cows are 3 to 4 yrs. old. Due September 1st, 75 days. Bred to Circle A Bulls. All shots.

15 fancy Blk 4 yrs. old Angus Cows. Very Gentle. Bred to Circle A Angus Bull due October 15th, 45 days.

10 fancy Blk or Blwf Cows. Be 3 to 5 yrs. old with fancy Blk Calves by side.

10 fancy 3 to 4 yrs. old. Blk cows with fancy Jone Angus Calves by side. All shots.

32 Red Angus or Char Cows. Bred to Red Angus Bull. Start calving September 15th. Cows from 3 to 8 yrs. old.

2 Fancy Registered 18 month old Angus Bulls.

1 5 yrs. old Registered Angus Bull.

Several other cows expected by sale night.

This ad was made 2 weeks in advance Don't miss this sale. Many more expected by sale day. All bulls sell at the start of the sale at 6:00pm.

For more information contact:

Jack Harrison 573-999-7197 • John P. Harrison 573-220-1482
Roger Temmen 573-680-4538 • Glenn Stagman 573-619-8495
Claude Niemeyer 573-470-1017 • Justin Oberling 217-440-7724
Wayne McCluggage 573-473-6314 • Chad Nickelson 573-631-1627
Glen Stegman 573-619-8945 • Lynn Crouch 417-399-4148

CALLAWAY LIVESTOCK CENTER INC.
573-642-7486

Buildings • Hunter's Cabins • Lawn Furniture



MISSOURI HISTORICAL BOOK: published by State Historical Society of Missouri. \$6.50. 417-532-2045 leave message. Lebanon.

10' LANDPRIDE RCF3010 BRUSH HOG: \$5,500. 417-270-1505. West Plains.

Team Electrical & Plumbing

"The Professionals you can count on"
Electrical • Solar Power • Plumbing • Lighting Installation

100% Satisfaction Guaranteed	Fully Licensed & Insured	\$100 Estimates with upfront pricing
------------------------------	--------------------------	--------------------------------------

For the best quality of work every time...
Give "Team" a call today!
417-349-6200 • www.teamelectricalplumbing.com

2 MALE BORDER DOODLES: 1 black & white, 1 blue merle, 5 months old. 573-739-9431.

HISTORY OF THE SCHOOL OF THE OZARKS: at Point Lookout. \$5.00. 417-532-2045. (leave message and phone number). Lebanon.

FULL BLOODED GERMAN SHEPHERDS: 2 female, 4 males, not registered. 417-733-7062. Niangua.

18,400 BTU WHIRLPOOL AIR CONDITIONER: \$200. 573-576-7130. Park Hills.

CALUS LOGGING

20 YEARS EXPERIENCE
Buying Standing Timber
Walnut & Oak

Joe Calus, Owner
CERTIFIED 417-926-4606 • MTN. GROVE

LAND MANAGEMENT: We offer brush and tree clearing, fence row clearing, brush hogging, driveway repair/installation, yard prep and seeding. Call 417-689-2317. Marshfield.

MUSCOVY DUCKS: Adults & young. 660-337-6666. Fortuna.



Now Hiring

Entry Level Production Technicians
Fulton, MD & Vandalia, MD
On The Job Training Provided
• Excellent Wages • Full Benefits

Skilled Positions
Mexico, MO
• CNC Machinist • Die Designer

www.thinkhwi.com/careers



HWI

HarbisonWalker International®

SHANNON AUCTIONS

--Auctioneers--
 • JD Shannon • Joe Shannon •
 417-349-0290 • Mountain Grove, MO • 417-926-2581

DIRECTIONS: **VANZANT, MO**—Hwy 95 South out of Mountain Grove to Hwy. W to AH Hwy., on right side of AH Hwy. Watch for Shannon Auction Signs.

SAT., JULY 31, 2021 – 9:00 AM

NEYL GRAY

PERSONAL PROPERTY / FARM EQUIPMENT



... HOUSEHOLD ...

Maytag washer/dryer set •microwave •Mason jars •red glass set •flower vases •table w/4 chairs •office chair •end tables •coffee table •sofa •recliners •entertainment center •book shelf •table •Queen size bed •dressers •kids dresser •kitchen stool •hide-a-bed love seat •school teacher desk •Denver mattress(adjustable head & feet) King Size •Serta mattress(adjustable head & feet comfort) •patio table set



... ANTIQUES ...

Hutch •little rolltop desk •wooden baby crib



... TOOLS / LAWN EQUIPMENT

Limb saw •Troy Bilt weedeater •tool boxes •hand tools •paints •Yard Man garden tiller 5 hp dual direction power to perform •Ryobi table saw •drill press workbench •electric limb saw •aluminum truck bed tool box •John Deere lawn cart

... LAWN MOWER ...

Zero turn Toro Timecutter, SS 4225, V-twin 22.5 hp, 42" deck



•TRACTORS/FARM EQUIPMENT

LS3200 Hydro 4x4 Kubota tractor, 139 hrs. w/ bucket •L4600 Kubota tractor, 295 hrs., 4x4 w/ bucket •2017 Delta 16'x6' stock trailer, like new •welding trailer •3-pt Land Pride Bush hog RC 2072 •3-pt hydraulic post driver •3-pt bale spike •Kimco side x side (part machine only) motor needs work



... BOAT ...

Lowe 17 ft 1983 model, 2 depth finder monitors, trolling motor, Evinrude 50 hp, 3 live wells



AUCTIONEER'S NOTE: Neyl has sold the house and farm and is down sizing. Everything is kept nice and clean. There will be more items added as we get into moving things. Come join us for a great auction. *Thanks. JD*

TERMS: Cash or approved check. Conditions: I.D. required to register, items sold as is, no warranty. Nothing loaded or removed until paid for in full. Auctioneer reserves the right to reject the bid of anyone who is not a registered bidder. Announcements made day of sale take precedence over any printed material. Auction service, employees, and/or owners are not responsible for accidents. Concessions and Porta-potty available.

ANNUAL JULY CONSIGNMENT AUCTION

SATURDAY, JULY 31, 2021 AT 9 AM
WHEELER AUCTIONS LOT, 23101 HWY. 24, PARIS, MO



Wheeler 
AUCTIONS & REAL ESTATE

2000+ PIECES OF MACHINERY

23101 HWY. 24, PARIS, MO 65275 | 660-327-5890
WWW.WHEELERAUCTIONS.COM

RECEIVING MACHINERY DAILY STARTING:
Monday, July 12 until Thursday, July 29 at 12 Noon
8 A.M. - 5 P.M.(M-F) | 9 A.M. - 3 P.M. (Sat. & Sun.)



Live Online Bidding Powered By: **proxibid**

REAL ESTATE & ESTATE AUCTION

Saturday, July 31, 2021 ~ 9:00 AM

LOCATION: 647 S Dade 223, Everton, MO; Directions: At Everton From Jct Of Hwy M & 160 Continue East On 160 Approx 1 Mile To South Dade 223 Then Go South To Sale Site (Watch For Signs)

Auction For Richard H. & The Late Yvonne M. Dodd



Real Estate Sells First At 9:00 AM

Will Offer 60 Acre M/L Farm That Has Been Used For Cattle Operation, Has 2 Ponds, Fenced & Cross Fenced W/Some Being New. Has Excellent Corral & Alley System. Setting On The Farm Is A 2 Story W/Basement 4 Bedroom, 2 Bath Home That Has Kitchen, Dining, Utility, Pantry Type Sewing Rooms, Also Has 12x22 Full Front Sunroom, Nice Porch W/Side Deck W/Enclosed Back Porch As Well. Basement Also Contains An In House 2 Car Garage. This Is An Outstanding Home W/Large Cedar Lined Closets, Oak Cabinet, New Dishwasher & Gas Range, But Electric Hookup Is Still Available If Want To Change To Electric Range, Has Metal Roof, Updated Windows, New Siding & Leaf Filter Gutters. Home Has Central Heat & Air, Also Has Wood Furnace & Gas Backup, 2 Water Heaters & On Well Water With Well Being Approx 600 Ft Deep. Farm Also Has Barn, 40x40 Quansit Hut, Has 12x36 Lean To Shed, 12x16 Garden Shed, 11x11 Rock Smokehouse, & An Excellent 2 Car Garage W/Concrete & Electric. Yard Has Upright Electric Sockets Running Throughout Yard, Setting In A Nook Secluded Area. This Is A Very Clean & Outstanding Farm & Home. You Will Have Great Opportunities Here. There Are Not That Many Opportunities To Purchase Such An Outstanding Farm & Home At Auction. To Preview Contact Bill At 417-214-0093. Terms: 10% Down Day Of Sale With Signed Contract And Balance Due In 45 Days Or When Closing Date Set By Abstract Office. Seller Has The Right To Accept Or Reject Any And All Bids.

Antique Furniture, Appliances & Pellet Stove

Ant Tiger Oak Curio Cabinet, Ant Buffet, Ant Pie Safe, Ant Pantry Cabinet, Ant Washstand, Ant Oak 1800's Bed, Ant Edison Disc Player Victrola, Rare Ant Edison Fireside Tabletop Phonograph, Ant Oak Treadle Sewing Machine, 2 Ant Cast Iron Heat Stoves, Ant Oak Player Piano, Ant Kitchen Table, Ant 2 Door Wardrobe That Was Turned Into A Gun Cabinet, Sm Ant Tables, 2 Lg Curio Cabinets 1 Cherry, 1 Oak, Ant Library Table, Ant Couch, Ant Setting Chairs, Drop Front Secretary, Ant Ornate Hand Painted Lamps, Stained Glass Pes, Area Rugs, Prim Doors & Windows, Jewelry Armoire, Lift Chair, Recliner, Wood Fireplace Insert, Electric Fireplace, Eagle Pellet Stove, Over 2+ Tons Of Heat Pellets, Very Lg Lot Of Cut & Split Wood, Stainless Side By Side Refrigerator, Front Load Dryer, Upright Deep Freeze, Lg Flat Screen TV, Other Items Not Listed

Antiques, Collectibles, Primitives & Households

Very Lg Lot Of Railroad Collectibles Inc Trains, Train Cars, Train Sets, Actual RxR Switches, RxR Lanterns, 2 RxR Switch Lanterns, Several RxR Memorabilia Collector Pes, (One Of The Best Railroad Collections We Have Sold In Our 24 Years Of Business), Over 500+ Santa Claus Collectible Pes Inc Possible Dreams

Auctioneers Note: It Is An Honor To Be Conducting This Auction For The Dodd Family. Richard Is A Very Great Man & It Has Been An Honor To Get To Know Him & His Family Personally. This Is A 100% All Around Great Auction For Everyone. The Farm & Home Are One Of The Best Opportunities We Have Ever Offered To Anyone At Public Auction. This Truly Is An Outstanding Real Estate Opportunity. Don't Miss Out. Probably The Best Collection We Have Ever Offered Of RxR Items, Santa Claus & Ornament High End Items Also Great Decanters, Antiques, Collectibles, Primitives, Antique Furniture Items, Farm, Tools, Outdoor, Plants & Trees Are Excellent As Well. You Do Not Want To Miss This Auction. Please Plan Now To Attend. **Sale Order:** Real Estate Sells First Followed By Appliances, Antique & Modern Furniture Then Move Into Small Antiques, Collectibles, & Household Items. At Approx Noon Will Offer RxR Collectible Items, At Approx 1:00 PM Will Offer Autos, Tractor & Equipment. Tools & Outdoor Related Items Will Finish Auction. Possibility Of Running 2 Rings So Bring A Friend!!! See Ya There!!!

Terms: Cash or check with proper ID. Now accepting most major credit cards. Nothing removed until settled for. Statements made the day of sale takes precedence over printed material. Everything sold as is where is. Not responsible for accidents. Restroom available. Concessions Provided. Check our website for upcoming auctions and for additional pictures!!!



NANCE AUCTION SERVICE

No Matter How BIG or small, We Do Them All!

www.nanceauctionservice.com

Col. Bill Nance 417-214-0093

In God We Trust

Philippians 4:13

Ornaments, Miniatures & Hand Blown, Excellent High End Collection, Over 100+ Blown Glass Christmas Ornaments Of High End Collecting Kind, Over 50+ Whiskey Decanter Collection Of Various Kinds Inc Wild Turkey, Lipscomb, & Others, Lg Lot Of Player Piano Rolls, Old Crocks Inc Some From RxR, Sm Whiskey Bottle Collection From All Over The U.S. & Europe, Dickerson Villa Christmas Scene High End Pes, Lots Of Old Ant Glassware, Graniteware & Galvanized Pes, Fiesta Dishes, Dale Earnhardt Nascar Collection & Several Nascar Diecast Cars, Ant Oil Lamps Inc Aladdin, Old Toys, Old Jewelry, Ant Pitcher Pumps, Ant Flower Cart, Real Texaco 12 Ft Gas Station Pump Light, Ant Gas Station Oil Can, Ant Gas Maytag Motor, Kraut Cutters, Old Kerosene Heaters, Ant Church Or School Bell, Ant Grinder, Old Red Wagon, Wood Whiskey Barrel, Old Beanie Baby Collection, Old Books, Prim Tools, Old Jars & New Canning Jars, Set Of 6 Ant China Set Rosary Pattern, Bell Collection, Lg Lot Of Ornate & Rare Knick Knack Pes From All Over The U. S., Sm Kitchen Appliances, Pots, Pans & Dishes, Other Items Not Listed

Portable Building, Autos, Tools & Outdoor Items

12x24 Portable Building, 2006 Lincoln Signature 4 Door Town Car Fully Loaded Has V8 Motor, Auto Trans, Approx 117,000 Miles, 1966 Chevy Historian 4x4 Truck Has 4 Speed High & Low Trans, 283 Motor, Runs Great, Miles Unknown, Several Parts For A 1971 Plymouth Car, Model A Engine, Outdoor Shelter House, Welder, Drill Press, Sandblaster, Chop Saw, Radial Arm Saw, Rigid Sander, Delta Band Saw, Several Sets Of Scaffolding, Chainsaws, Lg 220 Air Compressor, Sm Electrical & Battery Operated Tools Major Brands, Air Tools, Roll Around Toolbox, Push Mower, Retro Electric Scooter, Yard Utility Trailer, Rear Tire Roto Tiller, Wheelbarrow, Sm Hand Tools, Floor Jack, Plumbing & Electrical Supplies, Lg Lot Of Nuts, Bolts, Screws, Bolt Cabinet, Very Lg Lot Of Yard Décor Inc Fountains, Yard Statuaries, Concrete Pes, Landscaping Pes, Metal Yard Pes & Others, Rain Barrels, Patio Box, Patio Furniture, Yard Sink, Garden Carts, Raised Flower Bed W/All Natural Soil, Lg Lot Of Plants & Trees Inc Hostas, Banguras, Corabells, Tropical Trees Inc Orange, Lime & Lemon, Other Items Not Listed

Flatbed Trailer, Tractor, Equipment, & Farm Related Items

18 Ft Flatbed Trailer, IH 240 Tractor W/Loader & Wide Front End (Needs Some Work), Portable Hobart DC Welder, Hay Trailer, 8 Ft Disc, 6 Ft Bush Hog, 6 Ft Box Blade W/Ripper Teeth, 3 Pt 6 Ft Blade, 3 Pt Hydraulic Wood Splitter, 3 Pt Bale Mover, Four 500 Gal Fuel Tanks W/Stands Some Have Gas & Diesel In Them, Truck Toolboxes, 60+ New Steel Posts, Some Pipe, Saddle, Lots Of Lumber & Tin, Some Scrap Iron & Alum Wire, Other Items Not Listed

JOHN RUPPERT ESTATE AUCTION 9 a.m. Saturday, July 31st

Location: 10794 Austin Lane, Plato, Mo. 65552 **DIRECTIONS:** From Houston - Take Hwy. 17 West for 23 miles, then turn left onto Hwy. 32 for five miles to Kimrey Drive then to auction on Austin Lane. From Plato take 32 Hwy. east to Kimrey Drive then to auction on Austin Lane. Watch for auction signs day of sale.

★ TOOLS ★ MISCELLANEOUS ★

Craftsman Cordless Drill Set • Dewalt Skilsaw, *New* • Porter Cable 15 amp • 10" Folding Compound Miter Saw • Angle Grinder • Proto Torque Wrench • Craftsman Super Router • Craftsman Drill Bits • Craftsman 3-ton Floor Jack • Shop Lights on Stand • 4-Ton Hydraulic Body Repair Kit • Sawsall • Craftsman Skilsaw • B & D Workmate • Trash Pump • Come A Longs • Creeper • Hammer Drill • Vises • Wood Clamps • Orion Gen Set • Timing Light • Micrometers • Voltmeter • Oscillating Multifunction Power Tool • Drill Doctor • S & K Sockets & Wrenches • Tap & Die Set • Snap On Compression Gauge • Level • Ladder • Climbing Harness • Log Chain • Jack Stands • Hand Tools • Edelbrock Carb • Chevy Wheels Fits Corvette • Wood Planes • Misc Tools Not Listed •

★ AMMO ★ GUN ★

16 boxes 30-06 Winchester • 3 boxes 38 Special • Approximately 1,500 Rounds 22 Long Rifle • 200 Rounds 20 Gauge • Over 1,000 Rounds of 45 Auto • Old Japanese Rifle •

★ LAWN ★ OUTDOORS ★ RECREATIONAL ★ TRAILER

Beach Umbrellas • Coleman Stove • Owl Decoys • Pool Table • Pool Sticks • Ping Pong Table • Snow Skis • Ski Boats • Snow Sled • Wheelbarrow • Kayak • Boat and Trailer • Men's Bike • Guitar • Several Old Trains including American Flyer • Lawn Mower Trailer With Ramp • Many Items Still Not Listed •

★ HOUSEHOLD ★ FURNITURE ★ COLLECTIBLES ★

Refrigerator • Four-Poster Queen Bed • LG Flat Screen TV • Kitchen Island • Dining Room Table & Six Chairs • German Shrunck • Vizio TV • Session Silent Chime Clock • Coffee & End Tables • Toaster Oven • Corner Section Sofa • Movies • Baby Crib • Full-Size Bedroom Set • Microwave • Sewing Machine from H.D. Lee • Lawn Chairs • School Desk • Wood Rocking Chair • Desk • Three Infrared Heaters • VHS • Misc Dishes • Pots & Pans • Linens and Bedding.



Auctioneer's note: Note the early start time. Don't miss this clean auction with something for everyone. Thanks Darren and Jake

TERMS OF AUCTION: Cash or check with picture ID. Nothing loaded or removed until paid for. Everything sells as is, where is. Not responsible for accidents, lost or stolen items. Auction day announcements take precedence over all previous advertisements. **LUNCH ON GROUNDS.**

Darren SCHEETS
AUCTIONS
(417) 457-6638 • (417) 926-8575
www.scheetsauctions.net



Wheeler Livestock Auction, Inc.

Special Stock Cow Sale

Osceola, MO



SAT., JULY 31, 2021 • 6:00 P.M.

Expecting 1,000 head of Bred Cows & Cow/Calf Pairs

Freeman Farms-

- 100 Fancy Balancer-Red Angus-Gelbvieh Cross hfrs., 1,100 lbs., All home raised out of Judd Ranch Bulls. Hfrs. bred to Beckton Ranch Red Angus calving ease bulls, start calving Sept. 14th for 60 days. The Freeman's have not bought a cow in 25 yrs., they have raised their own hfrs., and have used Judd Ranch bulls for 20 plus yrs., excellent genetics here. All hfrs. are extremely gentle, had all shots & will work in any herd.

Dave Sikes-

- 12 Blk Bal hfrs., 2 Red Bal hfrs., 1,200 lbs., Al'd to Judd Ranch CE bulls for Sept. 1st. Fancy set of home raised hfrs. w/ years of breeding.

Paul Sampson-

- 8 Char hfrs., 10 Red Ang/Char hfrs., 18 Red Ang hfrs., 1,200 lbs., bred to Show Me Select CE Red Ang bulls, start Aug 29th for 60 days. Pelvic measured, complete vac program, well cared for hfrs., bred to good bulls.

Narrow Gate Cattle Co-

- 20 Blk Gelv/Bal hfrs., 1,050 lbs., bred to Seedstock Plus Balancer CE bulls 12/3-2/11. Gentle set of home raised hfrs. w/ complete vac program.

DaMitz Farms-

- 20 Red Ang hfrs., 2 yrs., 1,100 lbs., bred to CE Red Ang bulls start Sept. 1st. Good hfrs., w/genetics.

Terry Sexton-

- 40 Fancy Red Ang hfrs., 2 yrs., 1,100 lbs., bred 3rd to CE Red Ang bull. Calve Sept 1st for 60 days, complete vac & mineral program, nice gentle set of hfrs.,

Gayer Farm-

- 20 Blk hfrs., 2 yrs., 1,000 lbs., bred 3rd to CE bull. Good gentle hfrs.

Tucker Farm-

- 14 Fancy Yllw Char X hfrs., 1,300 lbs., bred 3rd to CE Red Ang bull. Calve Sept 1st, these hfrs. are gentle, big & fancy. Complete vac program.

Denney Farm-

- 75 Fancy Blk cows, 2 yrs., 1,100 lbs. w/ 300 lb. clvs. All cows & clvs worked, tagged to match. Cows bred back to Jamison Horn Herf bulls. Bulls put in May 20th. 3 Horn Herf bulls, 2 yrs., 1,400 lbs., 47 Blk cows, 4-5 yrs., 1,350 lbs., bred 3rd to Ang or Herf bulls.

Miller Farm-

- 45 Ang cows, 4 yrs., 1,250 lbs., bred 3rd to Ang bulls, start Aug 15th for 60 days. 45 Ang cows, 4-5 yrs., 1,250 lbs., bred 3rd to Ang or Char bull.

Loyd Stockton-

- 5 Blk hfrs., 2 yrs., 1,050 lbs., bred 3rd to CE Gelv. bull. 15 Red & Blk cows, 3-6 yrs., 1,250 lbs., bred 3rd to Gelv. bulls. Good calf raising cows.

Rick Chism-

- 20 Blk Ang/Gelv X cows, 1,300 lbs., 5-7 yrs., 10 Char/Gelv X cows, 5-7 yrs., 1,300 lbs., All cows home raised, bred to Blk Bal bull start Sept. 1st.

Cheek Farm-

- 31 Blk cows, 4-6 yrs., 1,350 lbs., bred to Blk bulls start Aug 15th. 20 Blk hfrs., 2 yrs., 1,050 lbs., bred CE Red Ang bull start Sept 10th.

Raymond & Britta Winfrey-

- 50 Blk & Red cows, 3-7 yrs., 1,250 lbs., w/ clvs. up to 350 lbs., 10 Blk cows, 3-7 yrs., bred 3rd. 3 Blk Ang bulls, 3 yrs., 1,500 lbs., Worthington Angus breeding. Good set of calf raising cows.

J & S Farm-

- 50 Blk & Red cows, 4-6 yrs., 1,250 lbs., bred 3rd to Blk bulls.

Bar W Farm-

- 10 Blk & Red cows, 4-6 yrs., 1,200 lbs. w/ 10 Blk clvs up to 300 lbs., 23 Blk cows, 4-6 yrs., 1,250 lbs., bred 3rd. 8 Char & Red cows, 1,250 lbs., 4-6 yrs., bred 3rd. The above 41 cows are gentle & bred to good bulls, clvs. tagged to match.

Heston Farms-

- 29 Blk cows, 3-5 yrs., 1,300 lbs., bred to Ang bull to start Sept. 1st.

AUGUST COW SALE - AUGUST 28TH, 2021

Wheeler Livestock Auction, Inc.

Osceola, MO • 685 SE 13 Hwy., PO Box 560 • BARN 417-646-8102

Byron Wheeler-417-777-0897 • Skyler Fisher-417-298-9051 • Les Tennis-417-466-8786

Red Whistance 417-276-7909 • Zach Lightfoot 417-399-5053

Burleigh Wheeler-417-840-6561 • Darwin Hearting-417-296-1029

Kevin Wade-660-492-3279 • Tim Sherrer 573-855-1951

Office Manager: Weston Shelby, 417-298-1316

Bid online on CattleUSA • www.wheelerlivestock.com

Like us on Facebook-Wheeler Livestock Auction

WHEELER

LIVESTOCK

AUCTION INC.



OSCEOLA, MISSOURI

VEHICLES & EQUIPMENT AUCTION

350+ ITEMS SELL NO RESERVE!
Straight. Simple. Sold.
866.608.9283



WEDNESDAY, AUGUST 11

Bidding starts to close at 10 a.m. CDT



FP9322 '15 GMC Sierra 3500HD SLE Double Cab pickup truck



KW9973 '02 Kenworth T300 utility/service truck



II9606 '14 Dodge Ram 1500 Crew Cab pickup



HT9330 '07 Ford F750 SD XL rollback truck



HT9339 '08 Toyota Tundra CrewMax pickup



IA9950 '47 Chevy Fleetmaster



IF9975 '00 Fleetwood Bounder RV



DK2261 '06 Fleetwood Discovery 39L RV

INVENTORY INCLUDES: pickup trucks, campers, RVs, SUVs, classic vehicles, rollback trucks, equipment trailers, passenger vehicles, flatbed trucks, motorcycles, plasma table, ATVs, box trucks, vans, fire truck, shuttle buses, vertical lifts, automotive lift, sand blasters, refrigerated truck, lawn mowers and more.

All items are sold "AS IS." 10% buyers premium applies. Aaron McKee TX License #16401.

BID NOW!

purplewave.com

PUBLIC AUCTION

SATURDAY, JULY 31 @ 9:00 A.M.

Directions: 1128 cr 942 - BOSS, MO - **SOLD FARM**

From Salem, take Hwy. 32 to Boss, turn on AC, 4 miles to county road 942. Watch for signs.

HOUSEHOLD • FARM SUPPLIES • TRACTORS • AUTOS CAMPER • TOOLS & MUCH MORE!

2000 Chevy LS 2500 4x4, Flat Bed, Bale Spike
 Stall Feeders, Easy Bed Feeder - Gas Cans
 ATV Rack - ATV Passenger Seat, Storage Box
 Coke Crates - Best Toy Biking Jeep Top
 Boat Seats - Motorcycle Helmets
 KitchenAid Side-by-Side Refrigerator
 Stationary Bike - Computer Monitor
 Misc. Ammo, Shotgun & Pistol
 Gas Grill - Patio Table - Coolers
 © 2007 Wildcat 5th Wheel Camper, 24', Needs
 Water Heater, Good Tires, Forest River
 3600 Ford Tractor, 1 Owner, Good Tires, Runs Good,
 Gas Engine, 1377 Hours, Gibson Tractor
 Air Compressor - Roller Tarps, Big Truck
 Lot of Black Powder ACC - Fish Cooker

Stereo & Speakers - Metal Table - Animal Cages
 Oil Lamps - Shovels - Pile of Scrap Iron, Lots
 2006 KIA Optima EX, Needs Engine
 18000# Reese 5th Wheel Hitch - Crescent Anvil
 Set of Wheels & Tires off Honda 400 Rancher
 Yard Trailer - Rakes, Clean-Outs - Fisher Anvil
 Hand Tools - Sockets - Wrenches
 Lots of Truck Wheels & Tires - Cattle Water Tubs
 Lot Canning Jars - Cattle Working Supplies
 Plastic Mineral Tubs - Bander
 10' Feed Troughs - 5' Bush Hog Rhino, Round Top
 3pt. Bale Spike - 3pt. Sub Soiler - Potato Plow
 Ford 4610 Diesel, 2,000 Hours, Bush Hog Brand,
 Loader, Fluid Tires
 8' 3pt. Field Disc, Good Shape

5' Brush Cutter - Wagon Running Gear
 Parts for Vermeer 504 Round Baler
 Bumper w/Winch - Old Hay Elevator
 © M9960 Kubota LA 1353, 4x4, 520 Hours, Front
 End Loader, Built May 2014
 Barn Wood - Wooden Posts
 20 m/ 4x5 Round Bales, Not Wrapped, In Barn, Last
 Years Hay
Many more items not listed.
See you there! - Tom



OWNERS: TERRI & LADONNA PATTERSON

ANNOUNCEMENTS AT AUCTION TAKE PRECEDENCE OVER PRINTED MATTER

WULFF AUCTION

Auctioneers:

Col. Tom Wulff - Col. David Wulff
 498 Hwy. B, Salem, MO 65560
 573-729-8476

Clerk: Tracy Strange Cashier: Nancy Inman

See Wulff Auctions at www.thesalemnews.com/auctions

TERMS: CASH OR
 APPROVED CHECK -
 I.D. REQUIRED
 NOTHING REMOVED
 UNTIL SETTLED FOR

Licensed
 Appraisals



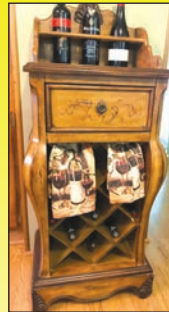
RAIN OR SHINE
 OWNER & AUCTION
 PERSONNEL NOT
 RESPONSIBLE FOR
 ACCIDENTS AT
 SALE SITE

LARRY DRENON AUCTION

27060 GREENBRIAR LANE, WARSAW, MO

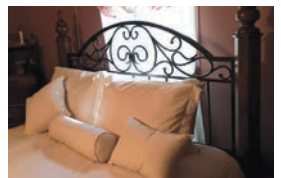
As I am selling my home and moving, I will sell the following at auction located from Warsaw north on Hwy 65 approx. 5 miles to State Road T, then 2 miles on T to Greenbriar Lane, then 1 mile on Greenbriar Lane to sale on:

SATURDAY, AUGUST 7TH AT 10 AM



TRACTOR and EQUIPMENT Kubota L3200 4x4 tractor, hydrostat, with LA 524 loader, excellent condition * King Kutter 7' blade * King Kutter XB 5' Blade * **UTV** American Sportsworks model 2wd-390 "Chuckwagon"
HOUSEHOLD Antique Lady's secretary desk w/wood pulls * Ashley Signature Collection Queen bed with scrolled metal headboard and wooden posts, nightstand, dresser, and chest of drawers, very nice * Antiqued finish wood standard size bedroom set, nice * LazyBoy sofa and loveseat, both double reclining, nice * Oak square front china/curio cabinet with sliding front door, very nice * Oak coffee table, glass top insert, serpentine legs * Free standing electric fireplace, nice dark wood mantle with storage * Antique Victorian library table w/marble top * Antique armchair w/claw feet * Wine bottle cabinet, nice * 47" Round oak table, 4 chairs * Sony 46" tv * Bose sound bar * Corner whatnot shelf * Oak entertainment cabinet * Wicker whatnot stand * Small jewelry armoire * Cheval mirror * Nice home décor * Electric hurricane style lamp with gold filigree on glass * Healthmaster standup scales * Parlor chair, upholstered hunter green * Hard-sided luggage * Lot Holiday indoor and outdoor décor
HANDICAP SCOOTERS Golden Travel wheelchair scooter * Gogo Ultra X scooter * Both scooters have batteries, manuals, and in excellent condition
COLLECTIBLES Set of Edwin Knowles Needlepoint dishes with accessories, given out on "Dish night" at the movie theaters in 1930's * Gold trimmed cigarette holder and ash tray in original case * 1944,46,47,48 Esquire pin-up girls calendars, complete * Aldolphus Busch corkscrew/knife * Sunshine biscuit tin, and other tins * Huffman 1 qt Oil dispenser can * France powder puff holder music box * Limoge hat pin holder * Miniature hat pin holder * 36 Hummell Gold Christmas ornament collection * Collectible Hallmark ornaments * Hummel and Norman Rockwell figurines * Metal bird cage * Several Antique coffee grinders * Lenwile Ardalt Japan handpainted

figurine music box * Handmade cross-stitched quilts * Donkey with cart porcelain collection * Noritake cups * Hand embroidered dresser scarves * ViewMaster in box, has several reels * Hanley England pictures, "Salley in my Alley" and "The Village Blacksmith" * Japan dresser set * Nippon hair catcher * 1969 Kalimar 7x35 Binoculars * Copper tea kettle, enamel tray w/lid, blue enamel wash pan, etc * Flat top trunk * Large cast iron boiler pot **EVERYTHING BARBIE!** Barbie gauze canopy for standard size bed * Barbie bed pillows, curtains, bedspreads, shams, sheets, blankets * Barbie t-shirt, hardback books, ornaments, other items * Vintage Barbie and Ken carrying case, clothes, and accessories * 1988 thru 2018 Holiday Barbies, in original boxes, with matching Hallmark ornaments * Barbie as Lucy and Marilyn Monroe in original boxes * 50th Anniversary Nascar Barbie in original box * 40th Anniversary Barbie and Ken in original boxes * Other Barbies in original boxes **POURCH AND PATIO** Small Antique wicker table * Metal loveseat glider * Metal table and chairs * 2 Metal patio chaises * Metal glider * Cast iron patio table * Rubbermaid patio cabinet * Suncast tall patio chest * Handmade picnic table and bench **LAWN AND GARDEN** Mo Jack lawnmower lift * 2x4 Yard trailer * Yard About lawn cart * Easy Rider Jr poly wheel barrel * Concrete jockey boy yard ornament * Shepherd's hooks, flower pots, yard ornaments * Garden tool caddy * Garden tools **TOOLS** Porter Cable Air Compressor, 25 gal 135psi * Century 3 drawer tool cabinet * 12 Drawer tabletop tool cabinet * 8 Gal shop vac * 8" Double wheel grinder * 30"x68" Shop bench with tool storage * Hyper Tough 1800 psi Power washer * Poulan 2075 * chainsaw * 7' Aluminum ramps * 12 Gal portable air tank * 6" vise * 18v Drill * B&D Drill bit set * B&D screwdriver bit set * Makita 10.8v drill set in box * 43 pc T-driver set * 65 pc Ratchet screwdriver set * Cosco 4' step ladder * Other items too numerous to mention



Auctioneer's Note: Everything on this sale is clean, maintained, and in excellent condition. Be sure to be with us!

JACKIE GODI

Larry DRENON AUCTION

Larry 660-596-8515 Laramie 660-221-4386
 Lacey 660-723-1104 Cooper 660-723-2221

Office: 660-723-6188

www.DrenonAuction.com

Terms: Cash, approved check, debit/credit card (convenience fee applied). Nothing to be removed until settled for. Not responsible for accidents should any occur. Statements made day of sale take precedence over printed material. Lunch served



HUGE BUILDING SUPPLY AUCTION

SATURDAY, JULY 31, 2021 9:00 AM

DIRECTIONS: 5 miles West of Fair Play, MO on Hwy. 32 or from intersection of Hwy. 13 & Hwy. 32 in Bolivar, go West 11.7 miles on Hwy. 32 to FR 1750 then West 1/4 mile to sale site.

Over \$75,000 of shelf pulls from major lumber yard. Tons of new merchandise including cleaning supplies, electrical, hardware, home & garden, electric & battery tools such as Dewalt & Craftsman.

FLOORING:

Pre-Finished: Hardwood, Engineered, 12 mile Laminate

Tile: Great selection of wood look tile from 6x24, 6x36, 8x40, 8x48 up to date colors to choose from

LVT Flooring: Huge amounts of Shaw "Glue Down" (Nice colors)

Tools: Large lot of Flooring & Tile tools

Porcelain Tile: 12x12, 18x18, 6x6 Asp. glass tiles

Mosaic Tiles: Large color selection, excellent for back splash & shower

Kitchen Sinks: SS, Composite, Under mounts

Faucets: Brand name/upscale, SS, Satic, O.R.B. Bathroom/ Kitchen/Shower

Toilets: 10 Complete sets, Handicap/ Elongated (Bone color)

Ceiling Fans: Good Selection, 48"x53", some LED

PEX Tubing: Red & Blue, 500' per roll

Mini Splits A/C/Heat: 12,000 BTU

Drywall/Primer: Level 5 Product, 100+ 5 gallon pails

Cedar Bead Board: 1x6 tongue & groove, several different styles to choose from, 28,000 L.F.

Pine Shiplap: 1x8 tongue & groove, 16' lengths, 10,000+ L.F., very nice

Composite Decking: 5/4x6"x12' PVC Caped

Cedar Siding: 1x8 Bevel, great looking 8, 12, 16' lengths, over 10,000 L.F.

Cultured Stone: 5-6 Pallets, 200 ft. per pallet (nice), several different styles

Much More By Sale Time!



Auctioneer's Note: Please note early start time due to tons of new small merchandise from major lumber yard. Don't miss this great auction, something for everyone!



For more info and pictures see Triple M Auctions on Facebook.

Col. James Mayfield • 417-298-8888



Absolute Land & Home AUCTION

Saturday, July 31st. * 10:00 AM

Location: 5600 Wise Hill Rd., Billings, Mo. 65610 From Jct. Hwy 60 & 14 take Hwy 14 S. ½ mi. then left on Wise Hill Rd. 1 mile to Property



140 Acres Prime Residential/Farm Land Offered in 11 tracts from 5 acres to 20 acres each.

The Property will be offered Individually, in any Combination & it's Entirety. You can buy from 5 acres up to 140 acres.

This Property is located in one of the Fastest Growing Area's in Christian County, with Gorgeous Building Sites Just east of Billings City Limits off of Hwy 14. Just minutes from Republic, Springfield, Nixa, Clever & only 30 minutes to Table Rock Lake.

Tract #1 - 20 Acres with 100+ yr. old 2100 sq ft, 2 Story Farm House that has lots of Charm & Character also has Barns, Mature Shade Trees & Nice Pond, Land is Open with new Pipe & Cable Fence & Pipe Corral with Covered Cattle Working Area, Wise Hill Frontage;

Tract #2 - 20 Acres all Open Land with Wise Hill Rd. & Private Road Frontage (Build your Hobby Farm to Suit);

Tract #3 - 5 Acres all Open with Public Road Frontage (Lots of Building Options);

Tract #4 - 5 Acres all Open with Public Road Frontage (Lots of Building Options);

Tract #5 - 10 Acres all Open with Public Road Frontage (Lots of Building Options);

Tract #6 - 20 Acres Open & Timber with Public Road Frontage (Many Beautiful Building options for your Farm);

Tract #7 - 20 Acres all Open, Public Road Stops at Property Line (Great Horse Property);

Tract #8 - 5 Acres mostly Timber with Neat Old Barn, has Private Road Frontage on 2 Sides (Lots of Beautiful Building Options);

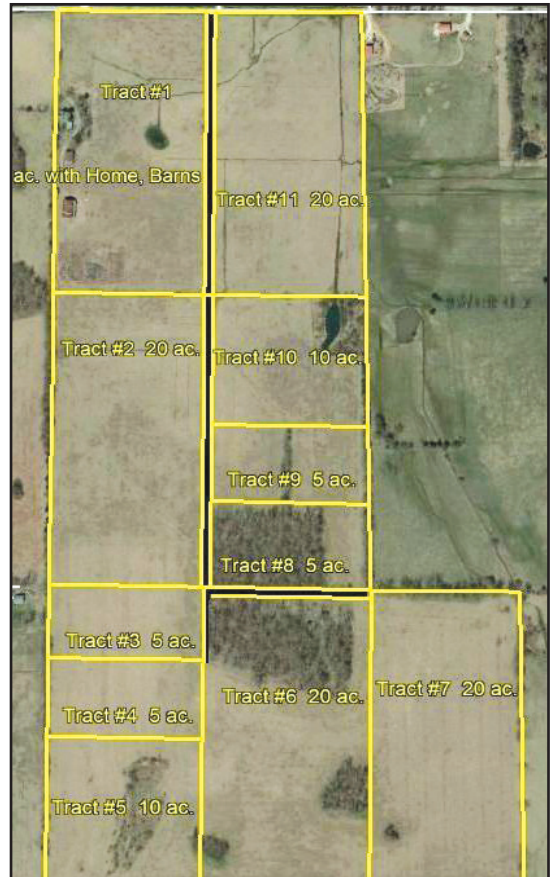
Tract #9 - 5 Acres all Open with Private Road Frontage (Level with lots of Building Options);

Tract #10 - 10 Acres all Open with Large Pond, Private Road Frontage (Extra Nice Building Site with the Large Pond);

Tract #11 - 20 Acres all Open Land with Wise Hill Rd. & Private Road Frontage (Build your Hobby Farm to Suit)

If your looking for an extra nice home site or piece of land outside of the city but with a short easy drive to work & play to build your Home or Hobby Farm then this is the property for you.

TERMS & CONDITIONS: Property sells Absolute to the Highest Bidder, Regardless of Price with Guaranteed Free & Clear Marketable Title 5% Buyer's Premium applies. Buyers-premium is an additional fee (5% of high-bid amount) paid by the high-bidder. All properties are being sold 'as is, where is' and are not subject to financing, inspections or any other contingencies. Foster Auction Service represents the seller only. The high bidder must make a 10% non-refundable deposit on sale day (cash, personal or cashier checks). Taxes will be prorated through date of closing. Balance and closing costs are due at closing 45-days or less from sale date. All parcels subject to any existing recorded easements. Locations of parcel signs, maps, and picture illustrations are for reference only. Fence lines may not follow property boundaries per survey. Agents / Brokers welcome but must register at least 24 hours prior to Auction!



OWNER: GARY MYERS



See our website for pictures and more info!

Auctioneer: Larry Foster | Galena, Mo

Phone: (417) 723-8329 Cell: (417) 839-6860

www.fosterauctionservice.com Email: bidnowsold@aol.com



BUCKET FORKS: \$75. 573-201-9556. Newburg.

FOR SALE: 2 New Holland 851 balers. Field ready. 573-422-3945. Meta.

2020 KANSAS CITY CHIEFS: McDonalds, red Friday, Superbowl Champs flags, unopened, NIP, \$15 each. 573-854-8132. Salem.

PARTS 4400 COMBINE MOTOR: Straw Walkers Raidator, 4420 Combine good machine, will part out. 636-384-6114. Wright City.

BUCKET SPIKE: \$325. 573-201-9556. Newburg.

2020 KANSAS CITY CHIEFS SUPERBOWL COCA-COLA CAN'S: Unopened, mint. \$15 for 6-pack. 573-854-8132. Salem.

JOE THEISMAN CAREER STAT AUTOGRAPHED JERSEY: JSA COA. \$95. 573-854-8132. Salem.

JOHN DEERE 38 CYCLE MOWER: Hydraulic 7 & 9 foot bar, needs parts. \$100. 573-201-9556. Newburg.

BUFFALO LIVESTOCK MARKET LLC



**276 Hwy 32 West
Buffalo, Missouri
July 24th, 2021**

Receipts: 889 Head

**Feeders \$3-\$4 Higher.
Cows \$3-\$4 Higher. Bulls Steady.**

REPRESENTATIVE STEERS

300-400 @ 175.00 to 200.00
400-500 @ 163.00 to 189.00
500-600 @ 159.00 to 175.50
600-700 @ 152.00 to 176.00
700-800 @ 140.00 to 150.50
800-900 @ 125.00 to 145.00

REPRESENTATIVE HEIFERS

300-400 @ 150.00 to 176.00
400-500 @ 142.00 to 161.50
500-600 @ 141.00 to 155.50
600-700 @ 127.00 to 142.00
700-800 @ 117.00 to 130.00

FEEDER BULLS

400-500 @ 160.00 to 180.00
500-600 @ 147.00 to 164.00
600-700 @ 125.00 to 145.00
700-800 @ 102.00 to 132.00
800-900 @ 95.00 to 96.00

BRED COWS

\$800.00 to \$1,110.00

COW & CALVES PAIRS

\$900.00 to \$1,300.00

OLDER SMALL PAIRS

\$650.00 to \$800.00

SLAUGHTER BULLS

High Dressing 102.00 to 104.00
Med Dressing 98.00 to 102.00
Low Dressing 80.00 to 95.00

SLAUGHTER COWS

High Dressing Cows 77.00 to 80.00 Top
Med Dressing Fleshy 66.00 to 75.00
Low Dressing Thin 45.00 to 65.00

MON-WED MARKET REPORT

Listen to KJEL 103.7FM • Lebanon or KY00 99FM • Bolivar

VIEW OUR SALES AT CATTLEUSA.COM

CALL FOR TRUCKING OR ON-FARM VISIT

Lyle Caselman • Owner-Manager
417-345-7876 • mobile 417-533-2944
Leon Caselman • Owner
417-345-4514 • mobile • 417-588-6185

Starnes Auto LLC

22115 Rt. 66 • Lebanon, MO 65536
417.718.2707 Cell • 417.588.3159 Office
www.starnesauto.com

1999 FORD SUPER DUTY RED	\$6,500
2003 BUICK CENTURY GOLD, 83,XXX MI	\$2,950
2003 CHEVY IMPALA CREAM, 48,XXX MI	\$5,200
2003 FORD MUSTANG WHITE, CONVERTIBLE, 150,XXX MI.....	\$4,200
2004 GMC SIERRA BLUE, EXT CAB, 174,XXX MI	\$7,250
2004 GMC SONOMA PEWTER, CREW CAB, 4WD, 154,XXX MI	\$6,500
2008 CHEVY SILVERADO RED, 4 DOOR, 143,XXX MI	\$9,750
2010 CHEVY TAHOE WHITE, 152,XXX MI	\$11,500
2012 CHEVY COLORADO ORANGE, 156,XXX MI	\$6,500

WE DO ALIGNMENTS!

**REAL ESTATE - AUTO'S
- PONTOON - GOLF CART
GUNS-TOOLS - FURNITURE
- COLLECTIBLES - MISC**

**SAT. AUGUST 7, 2021
10:00 AM**

303 WEST ST NIXA, MO
FROM HWY 160 NIXA GO WEST ON SOUTH ST 1/10 MILE, THEN NORTH ON S. WEST ST TO AUCTION ON LEFT. FOLLOW SALE SIGNS. BREAKFAST & LUNCH AVAILABLE

REAL ESTATE



APPROX 1997 BASE AREA, 2431 ADJ AREA SQ FT, 3 BEDROOM 2 BATH, DOUBLE CAR GARAGE, ALL BRICK HOME WITH KITCHEN/DINING COMBO, BUILT IN DISHWASHER, WALL OVEN, GAS COOK TOP STOVE IN LARGE ISLAND, PLENTY OF CABINETS, PELLET INSERT IN FIREPLACE, LARGE BACK DECK LEADING TO IN GROUND POOL, POOL NEEDS LINER AND PUMP REPLACED. STORAGE SHED, ROOF REPLACED WITHIN LAST 3 YEARS, LARGE MATURE TREES, ALL THIS SITTING ON APPROX 140 X 220 LOT SIZE. CLOSE TO ALL THE AMENITIES NIXA HAS TO OFFER! 2020 TAXES \$1775.49



OWNER: ESTATE OF STEVE & KAYE RUSSELL
FOR PICTURES SEE WEBSITE OR AUCTION ZIP.COM TO PREVIEW CALL 417-830-0153
TERMS: 10% DOWN DAY OF AUCTION, BALANCE @ CLOSING WITHIN 30 DAYS OR BEFORE

REAL ESTATE SELLS @ 11:00
PLAN ON RUNNING 2 SALE RINGS
MANY ITEMS TOO NUMEROUS TO MENTION
LOOK FOR THE FULL LISTING IN
NEXT WEEK'S WEEKLY TRADER!

MELTON AUCTION & REALTY CO LLC
www.MeltonAuction.com | Roger@MeltonAuction.com
Roger Melton | Nixa, Mo | 417-830-0153 or 417-725-1801

MON-WED MARKET REPORT
Listen to KJEL 103.7FM • Lebanon or KY00 99FM • Bolivar

VIEW OUR SALES AT CATTLEUSA.COM

CALL FOR TRUCKING OR ON-FARM VISIT

Lyle Caselman • Owner-Manager
417-345-7876 • mobile 417-533-2944
Leon Caselman • Owner
417-345-4514 • mobile • 417-588-6185

Moniteau County REAL ESTATE & PERSONAL PROPERTY AUCTION

● **FRIDAY, AUG. 6, 2021** ●
AT 6 AM

AUCTION LOCATION: 190 West Highway E, Latham, MO 65050
Directions: Just north of Latham, MO on the west side of Highway E.

THE REAL ESTATE CONSISTS OF 16.61 ACRES LOCATED IN TOWNSHIP 44N, RANGE 16W, SECTION 21 OF MONITEAU COUNTY, MO TO BE SOLD IN TWO TRACTS

TRACT ONE will be 3 acres and the homestead, with frontage and access along the east side of Highway E. In addition to the house, other buildings include a yard/garden storage shed, and a larger pole frame barn/shed used for machinery and hay storage

TRACT TWO will consist of approximately 13.61 +/- acres that will have frontage and access off Highway E along the east side. It is fenced and crossed fence and set up perfect for a small grazing project.



PERSONAL PROPERTY (TO SELL AFTER THE REAL ESTATE)

SELLING KUBOTA Z125SKH-54 ZERO-TURN MOWER, BRUSH HOG, PRIEFERT CATTLE CHUTE, CATTLE TROUGHS, LOTS OF TOOLS, CHAINSAWS, WEED EATERS, OTHER FARM AND LAWN ITEMS

SELLERS: LEEROY & ROSE MARY KILMER

Wheeler AUCTIONS & REAL ESTATE

23101 HWY. 24, PARIS, MO 65275 | 660-327-5890
WWW.WHEELERAUCTIONS.COM

For more information call Charlie Nordwald at 636-795-4552, or visit www.wheelerauctions.com

BITTERSWEET EARTH BOOK: Edited by Ellen Gray Massey of Lebanon, 405 pages, \$9.50. 417-532-2045. (Leave message and phone number.) Lebanon.

WANTED: Norinco AK47. 573-366-3821. Park Hills.

WANTED: Micro Draco. 573-366-3821. Park Hills.

UTV/ATV SEEDER: \$125. 573-201-9556. Newburg.

**Where it's always
a bull market!**

Angus - Brangus - Ultrablacks

WALL STREET CATTLE CO.

14603 HIGHWAY KK, LEBANON, MO
417.288.4444 • WALLSTREETCATTLE.COM

1950'S COLT REVOLVER DEALERS MEMORABILIA: All for \$100. Call pm. 573-764-3517.

GE 5,050 BTU: 100 amp, air conditioner. \$50. 573-576-7130. Park Hills.

AKC ASCA REGISTERED MALE AUSTRALIAN SHEPHERD PUPPY: Black/tri, UTD shots, \$700. 630-687-0705. Falcon.

MID MISSOURI STOCKYARDS

REGULAR SALE EVERY THURSDAY 11AM

SPECIAL COW SALE • AUGUST 14TH • 6 P.M.

For Farm Visits, Market Updates, or Trucking

Call **Zach Cox 417-777-1320**
Dan Romine 573-578-4939

**Competitive Buyers!
Competitive Commission!
Competitive Market!**

Barn: 417-532-9292

1-44 • Exit 123 "just outside of Lebanon"
17505 Route 66, Phillipsburg, MO 65722

For weekly market updates, visit us at www.midmostockyards.com

FORD 7FT CYCLE MOWER: \$450. 573-201-9556. Newburg.

FOR SALE: New and used tin, \$20 a sheet on the new, \$8 a sheet on the used. 573-247-9655. Salem.

7 YEAR OLD JERSEY COW: In 3rd stage. \$800. 573-315-9009. Potosi.

ROLL 1959 B.U. MONTICELLO PENNY'S: First year for these. \$40. Call pm. 573-764-3517.

HORSE SALE

**First Friday of Every Month
Friday, Aug. 6th
Tack @ 5pm
Horses @ 8pm**

Summersville Livestock Auction
245 2nd St. • Summersville, MO
417-247-8051

7 AKC GERMAN SHEPHERD MALES: Sable & black/red, UTD shots & worming, papers in hand. 417-399-5073. Weaubleau.

ROLL 1958 B.U. LINCOLN WHEAT PENNY'S: Last year for these. \$60. Call pm. 573-764-3517.

TANDEM 12 FT. BOX TRAILER: \$450. 573-201-9556. Newburg.

Wright Spray Foam Insulators, LLC
Commercial & Residential
Call for FREE Estimates!

Ervin Gingerich 417-926-2052
B. Eli Yoder 417-746-4932

CALL DUCKS & BIRMINGHAM ROLLERS: Call color, gray, pastel, blue fawn, blacks & blue bibs. 573-702-4022. Bismark.

OZARK EMPIRE FAIR-SPRINGFIELD 60TH ANNIVERSARY COOKBOOK: 1937-1996, 144 pages. Prize winning recipes from the fair. \$9.50. 417-532-2045, (leave message) Lebanon.

YOUR LAND AND FARM EXPERTS!

Camden Co-18.5 Acres

\$159,000



It's not often that a beautiful, hardwood forested property with a crystalline, live water creek and not one, but two secluded, rustic cabins come along for sale. Peaceful and quiet, these eighteen and a half acres in a lush holler offer complete privacy at the very end of Dave Allen Drive in Camden County. The owners once had a large vegetable garden in the fertile bottom ground and the many walnut trees will provide their nuts this fall. Deer, turkey, hawks, turtles, and other wildlife are plentiful. Multiple springs feed the creek where you can catch creek fish, crawdads, and bullfrogs, with a waterfall and swimming hole for the kids. Rocks on the bottom of the creek are covered with mollusks, indicators of water quality. The property is a park like setting, providing a wonderful playground for all ages. This is the place where you can leave the hustle and bustle behind, and as

a good friend once said, "get your mind right". With solid rock footings, oak plank lap siding and a heavy steel roof, the main cabin is well kept with two bedrooms, open kitchen and living area. The utility area has a full shower and a 220V washer/dryer hookup. Upgraded electric, brand new windows and doors as well as a new well tank and pump have just been installed. There is still some work to be done, including adding a septic system and toilet and eventually a new deck, but this summer cabin is ready to be moved into now! Reconnect the existing wood stoves or add electric baseboards and you can extend your stay from the blooming of dogwoods and redbuds to the autumnal turning of the leaves. Thought to be over 100 years old, the second dwelling is an original 1.5 story log cabin. A more recent addition was added some years back by the owners. The rustic front porch looks out onto a lovely green meadow and the creek. For many years, the owners' parents stayed in the old cabin during their summer visits. Some TLC for this second cabin will be in order. A 24' x 39' all metal building with concrete floor will house your truck, boat, car, tractor or lawn equipment. This versatile out building has a large overhead garage door and two metal exterior entrance doors. Located only ten minutes from Ha Ha Tonka State Park with hiking, fishing, swimming and the new Kayak launch rail, ten minutes from the Big Niangua River Trail, twenty minutes to Camdenton, and thirty minutes to Bagnell Dam and Osage Beach, you can enjoy all the amenities that the Lake of the Ozarks area has to offer and then retreat to your private sanctuary amongst serene woods. **Shown STRICTLY BY APPOINTMENT ONLY, call Danny Miller at 573-528-1489 or email at dmiller@missourilandco.com**

Camden Co-30 Acres

\$125,000



Nice wooded private 30 acres only minutes from the town of Camdenton. This would be a great place to build a new home. Road comes in along the north line. Mainly oak timber with some cedar. Great hunting a lot of deer in this area. Very secluded and private and perfect for your get away place. It is in the highly sought after Camdenton school district. Electric is available. **This place wont last long call Mike Stoner at 573-774-9775**

Cole Co-14 Acres

\$154,000



Only 5 minutes from the Jefferson City mall and grocery shopping. Access by gravel deeded easement road. This tract has a nice level open home site in the front with electric right there on the property. There is nice mixture of open and wooded here. Nice mature timber slightly

below the home site which overlooks the bottom field. Lots of deer have been spotted here. Property is fenced on two sides. **Call Jason at 270-350-6434 today.**

Cole Co-1.7 Acres

\$60,000



Don't miss the opportunity to buy 4 lots for the price of 1! This approximately 1.7 acre lot is ready to be split up into 4 individual lots, or keep it as one big tract. If you're a builder looking for your next job, an investor looking to build duplexes, or maybe you're wanting to build your dream home, this property is perfect for you. **Contact Jared Martin at (573) 291-1977 if you have any questions or to schedule a showing.**

**MISSOURI
LAND
COMPANY**

Farm, Home & Hunting Properties

**Rolla Office:
12647 S. Hwy 63, Rolla
573-308-4868**

**Cole Camp Office:
14981 Centerline Ave.,
Cole Camp
660-668-4868**

www.missourilandco.com • 660-668-HUNT

Toll FREE number for both locations 844-974-1850

KUSTER LOGGING
BUYER of Standing Timber Oak and Walnut
Dozing Now Available
417-259-0047
 References Available



1989 TOYOTA X-CAB DELUXE: 5-speed, good tires, 173,000, good running truck. \$7,500 obo. 573-433-0131 or 573-512-1050. Richland.

FREE TO GOOD HOME: Mixed breed puppies, mother English Shepherd. 417-288-1009. St. Roberts.

POWER WASHING, CALL JET STREAM POWER WASHING FOR ALL OF YOUR GRIM TO SHINE NEEDS: We wash it all, semis, stock trailers, campers, equipment, houses, buildings and driveways. If it has grime, call today to make it shine in no time! 417-270-1075. Potosi.

8,500 WATT GENERATOR: Electric start, used very little, excellent condition. \$700. 417-866-4919. Willard.

HEALTHCARE MADE EASY
 WE CAN HELP YOU NAVIGATE HEALTHCARE.GOV
 Choices In Health & Life Insurance
 Mike Eblen, Agent
417-532-3360
 238 S. Jefferson Avenue Suite A, Lebanon



REAR AXLE, DRIVESHAFT AND 4 SPEED TRANSMISSION: From 1958 Chevrolet 1 ton truck. \$300. 573-729-0272. Salem.

ROUTE 66 – THE MOTHER ROAD BOOK: by Michael Wallis. Hardback, 243 pages, \$12.50. 417-532-2045. (leave message). Lebanon.

NATURAL BOBTAIL ENGLISH SHEPHERDS: Out of working parents. 573-663-7459. Centerville.

BUCKET FORKS: \$75. 573-201-9556. Newburg.

BIG RED STRONG PACK MULE: 8 or 9 years old. Healthy, green harness broke. \$1,500. 417-532-4042. Lebanon.

Best Antiques & Collectibles Under the Moon!
 Hootie Hoot Hollow *Antique/Resale*
 314-346-7098 • 314-610-0204 • 11520 Hwy. 64 • Lebanon
 1/2 mi. from Bennett Spring State Park



IHC 1086 DIESEL TRACTOR: Cab, all new ac, 130 hp. \$13,000. 573-765-4406. Richland

JOHN DEERE 4230 DIESEL TRACTOR: Cab & cold air, 100 hp. \$13,500. 573-765-4406. Richland.

IHC 10 FT. WHEEL DISK: \$1,800. 573-765-4406. Richland.

NEW HOLLAND 853 ROUND BALER: \$1,800. 573-765-4406. Richland.

HESTON 4 BASKET HYD. FOLD TEDDER: \$4,200. 573-765-4406. Richland.

BRUSHHOG 6 FT. 3-POINT BRUSH CUTTER: \$950. 573-765-4406. Richland.

AM & Outdoor Sales



Premier Brush Cutter
 72" Cutting Width
 • High Flow or Standard Flow
 • Carbide Mulching Teeth

CL Fabrication Tree & Post Puller – Dominator
 • 1" thick AR400 steel jaws.
 • 2" diameter, CF 1045 main pivot pins.
 • Heaviest Built on the Market



WE ARE ONE OF THE NATION'S LARGEST JENKINS IRON & STEEL DEALERS!

Come see us today! Financing options available.

Eldon, MO • 31 Porter Rd • 573-434-9225
www.amoutdoorsales.com

1987 CASE IH 2096 DIESEL TRACTOR: Cab & Cold Air, 120 hp, Commin engine. \$14,950. 573-765-4406. Richland.

JOHN DEERE 6 FT. 3-POINT FINISH MOWER: \$1,600. 573-765-4406. Richland.



Fly Free with AFC.

AFC
ALTOUGH FLY CONTROL
PRODUCTS

KENT

Located in the Heart of the Amish Mennonite Community!
417-345-8600
19 Prairie Lane, Buffalo

Kropf Feeds

JOHNNY CALL BACK BOX: \$175. 573-201-9556. Newburg.

PLOWMAN LANDPRIDE: 15 ft. hyd. fold brush cutter. \$6,800. 573-765-4406. Richland.

JOHN DEERE 4020 DIESEL TRACTOR: Power shift, turbo. \$9,500. 573-765-4406. Richland.

AMERICAN SHADE: 3 – 7x8 ft. \$25 a shade. 573-201-9556. Newburg.

JOHN DEERE 467 ROUND BALER: Monitor, kicker, net wrap. 4x6. \$10,850. 573-765-4406. Richland.



Larry Heisel Rentals

Have Rock?

How about 3,500 lbs. of Hammer

Call Larry!

573-779-1500

www.larryheiselequipment.com

Rental Available in 636 or 573 area code

IHC 430 SQUARE BALER: \$1,500. 573-765-4406. Richland.

TWO 50 GALLON HANGING MINERAL FEEDERS: \$20 each. 573-201-9556. Newburg.

IHC HOUGH 65 ARTICULATING 4-WHEEL DRIVE LOADER: \$9,750. 573-765-4406. Richland.

JOHN DEERE 2755: Diesel tractor, cab & cold air, 75hp, with JD620 loader. \$19,950. 573-765-4406. Richland.



THE MOST COMPLETE LINE-UP IN THE INDUSTRY

Cutting widths from 36" to 104"

HUSTLER

For Outstanding Products & Service

AGRI-ENTERPRISES

1-1/2 Miles South Of Licking, MO On Hwy 63
573-674-2203 • 1-800-653-7152
www.agri-enterprises.com

NEW HOLLAND 315 SQUARE BALER: \$2,500. 573-765-4406. Richland.

NEW HOLLAND 411 DISKBINE: with roller. \$8,950. 573-765-4406. Richland.

SPECIALIST FROM "HARDSCRABBLE" BOOK: by Elbert Crittenden Traw, DDS. Life in Stoutland/Richland/Camden County area. Hardback, \$5.00. 417-532-2045. (Leave message and phone number.) Lebanon.

BOOTS: Rubber and leather boots and hip waders. Men's 11, Women's 7, some insulated, \$15-\$40 obo. 636-239-2695. Washington.

HISTORY OF THE SCHOOL OF THE OZARKS: at Point Lookout. \$5.00. 417-532-2045. (leave message and phone number). Lebanon.

CUSTOM SAW MILLING: 417-533-4607, 417-664-1195. Lebanon.

DARDEN PROFESSIONAL TIMBER HARVESTING, BUYING STANDING TIMER: Great prices, improve wildlife habitat and improve forest health. State Certified & Fully Insured! 573-247-4808 or 573-739-1122. Salem.

PAYING CASH FOR VINTAGE WHISKEY, BOURBON, RYE, SCOTCH, ETC.: Only full and sealed collections from old bars, estates, liquor stores, etc. Call or text 217-440-5752. St. James.

FOR SALE: 2007 Adirondack RV with slide-out. \$11,000. Would consider trade for building lot in the Ozarks. 417-766-3997. Springfield.



WE BUY White Oak Logs!

- ✓ Top prices for your logs
- ✓ Experienced log buyers
- ✓ Professional service

Chad Cook | Salem Wood Products
417.718.2950
5 miles north of Salem, MO on Hwy 19

INDEPENDENT STAVE COMPANY
Log Procurement & Sales

www.independentstavecompany.com

You own the land. Make it yours.

Compact Tractors Performance-matched attachments 20.9-62 HP



(417) 777-2391
quarleskubota.com

Save big on our #1 selling* sub-compact and compact tractors, featuring the versatility to handle every job and a wide range of performance-matched attachments. Stop in for a demo and to claim this offer on select models today.

\$0 DOWN 0% APR UP TO 60 MONTHS
PLUS
SAVE UP TO \$1,000

VISIT US TODAY FOR THIS LIMITED-TIME OFFER

New L2501DT w/Loader Deal!

L2501DT w/loader **\$22,995**
Financing Price

- NEW Kubota L2501DT
- 4wd, DIESEL, AG TIRES
- KUBOTA LOADER

- 5' ROTARY CUTTER
- 5' BOX BLADE
- NEW 18' KODIAK TRAILER W/RAMPS



KubotaUSA.com

*Based on EDA tractor sales data of under 20 horsepower models from 2009 to 2019. © Kubota Tractor Corporation, 2021. \$0 Down, 0% A.P.R. financing for up to 60 months on purchases of new Kubota BX, B, LX and L series equipment from participating dealers' in-stock inventory is available to qualified purchasers through Kubota Credit Corporation, U.S.A.; subject to credit approval. Example: 60 monthly payments of \$16.67 per \$1,000 financed. Customer instant rebates of \$500 are available on qualifying finance or \$800 on cash purchases of BX2680 equipment. Additional instant rebate of \$500 is available with purchase of one new qualifying implement. Some exceptions apply. Offers expire 6/30/21. Terms subject to change. This material is for descriptive purposes only. Kubota disclaims all representations and warranties, express or implied, or any liability from the use of this material. For complete warranty, disclaimer, safety, incentive offer and product information, consult your Dealer or KubotaUSA.com.

MOW LIKE A PRO!



ZEE 2HP,
24hp Kaw, 54" OCDC Deck
STARTING AT
\$6,199



BLACKHAWK,
24hp Kaw, 60" OCDC Fab Deck
STARTING AT
\$7,549



EAGLE,
27hp Kaw, 60" OCDC Fab
Deck, Suspension Seat
STARTING AT
\$10,849



* OCDC (Operation Controlled Discharge Chute)
Financing available WAC 0% for 48 month, See dealer for details



WCT Farm & Lawn LLC
3299 E Evergreen Rd, Strafford, MO 65757
417-859-4311 • www.wctfarmandlawn.com